



ZENPRISE

Protecting Mobile Enterprises
Everywhere

Keith Katz - Sr. Systems Engineering Manager, Americas East

Mobility Rapidly Coming of Age



Device Proliferation



2010

“Gotta Have It!”

Devices Eclipse PCs

App Explosion



2011

“That’s Cool!”

60 Apps Per iOS Device

Mobile Business Optimization



2012

“That’s Productive”

Best-in-Class Companies
3x as Likely to
Have Mobility Strategy

How do we manage
all these devices?

How do we protect our
data and network?

How can we transform
our business?

Sources: Asymco and Aberdeen

Zenprise Mobile Device Management



About Zenprise

- Founded in 2003
- Headquartered in Silicon Valley
- Backed by top Venture Capitalists

Why Zenprise?

- “Set it and forget it” Simplicity
- Built for Most Demanding Enterprises
- End-to-End Security & Compliance
- World Class Services, 24x7 Support, Training

Award Winning, Highly Ranked

- Ranked Top in Gartner Critical Capabilities report
- Forrester gives Zenprise perfect scores across the board
- Leader and leading Visionary in the Gartner Magic Quadrant



Zenprise Differentiated Value: Protection At All Layers



CEO



Employee



Board of Directors

DEVICES



Any and All

APPLICATIONS



Ever Increasing

NETWORK



Any Connection
to Enterprise

DATA



Repository
Integration

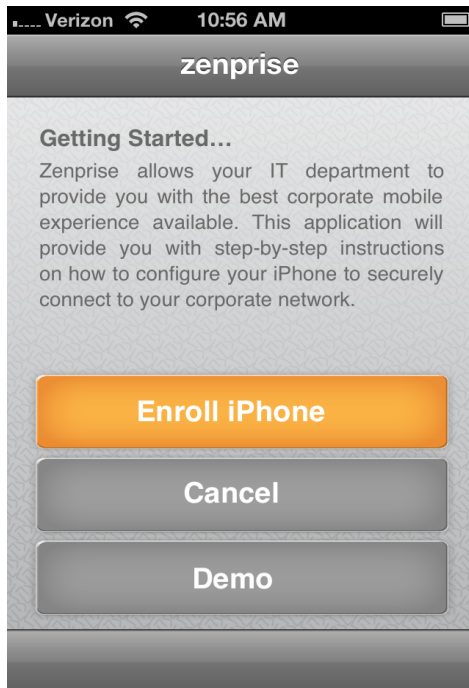
DATA (IP, non-public financial,
BI, customer data, employee data)

Real-Time Security At All Layers

Simplest for Users

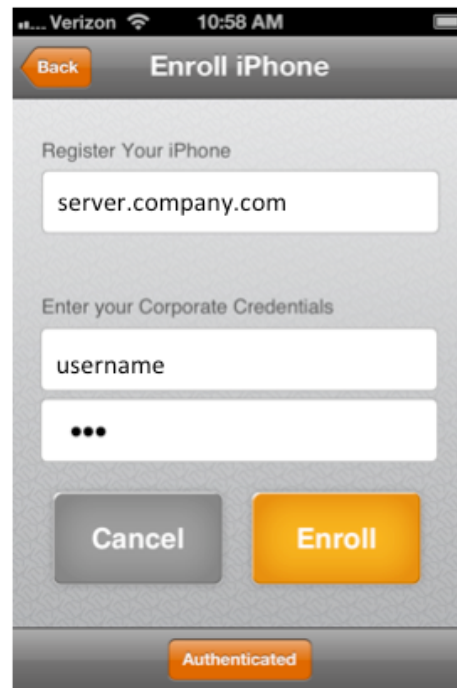


1



Begin enrollment

2



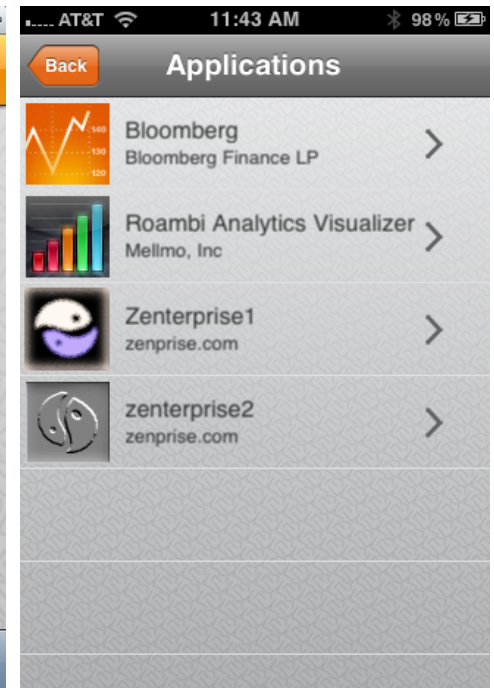
Enter credentials

3



Install cert and profile

4



Download recommended apps

Dynamic Defense



Dynamic Defense

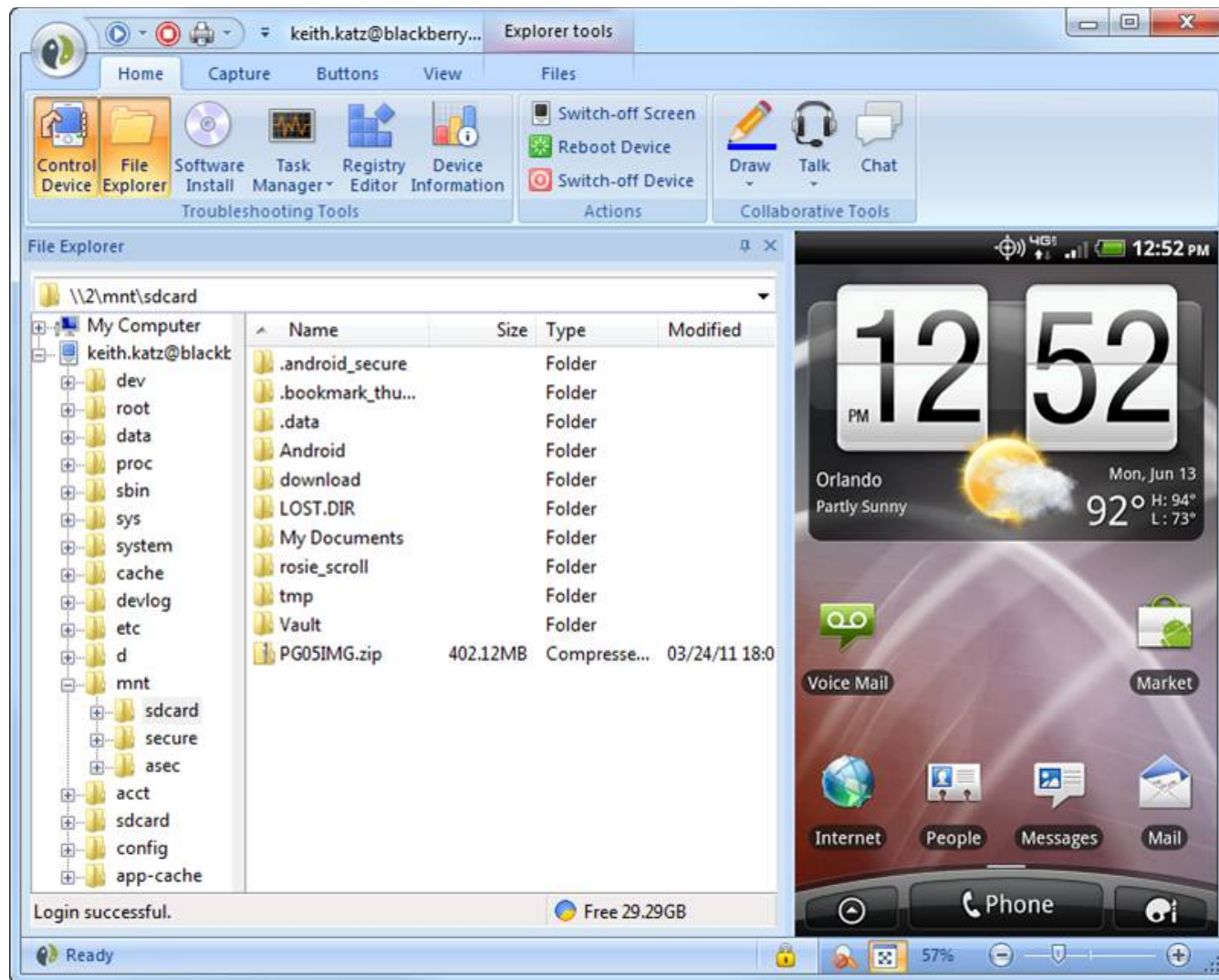
- Dynamic, context-aware policies for device resource or app usage based on time of day or location
- Granular device and data governance and control reduces risk and enables compliance

Mobile Network Intelligence

- The dashboard displays four charts related to network intelligence:

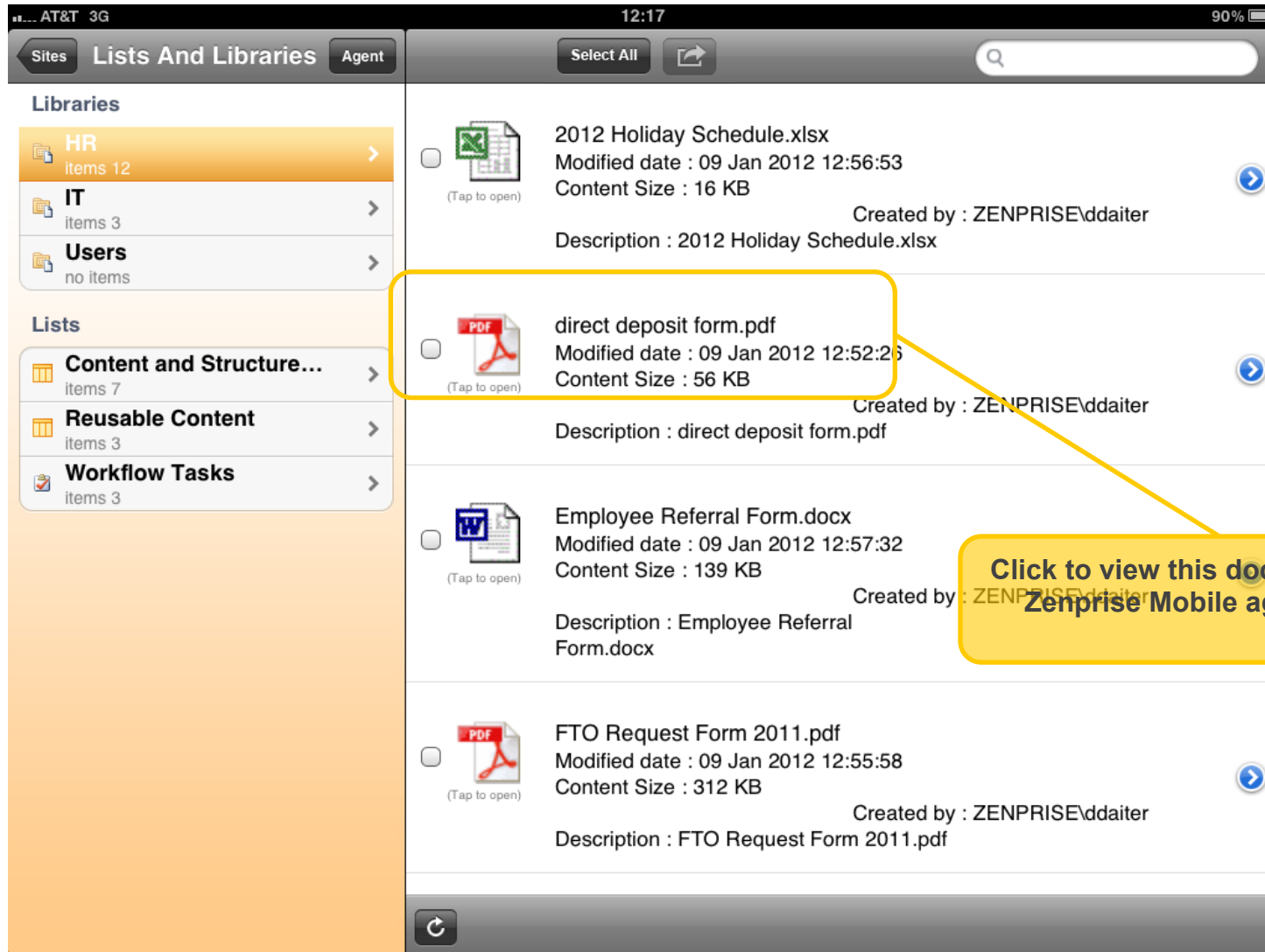
 - ActiveSync Connections by Device Type:** A pie chart showing connections from various devices. The largest segment is labeled 'iPad', followed by 'iPhone', 'inc', and others.
 - ActiveSync Connections by User:** A pie chart showing connections from different users. The largest segment is labeled 'Zenprise\dmmorris', followed by 'zenprise.com\jawahar', 'zenprise\mbowlin', and others.
 - Top 10 Allowed ActiveSync Connections by Username and IP:** A table showing the top 10 allowed connections. The first entry is for user 'zenprise\mbowlin' at IP '174.253.101.89' with a count of 252.
 - Top 10 Rogue devices:** A bar chart showing the top 10 rogue devices. The highest bar is for 'Appl82835PLWY7K' with a count of approximately 4,500.

Advanced Remote Support



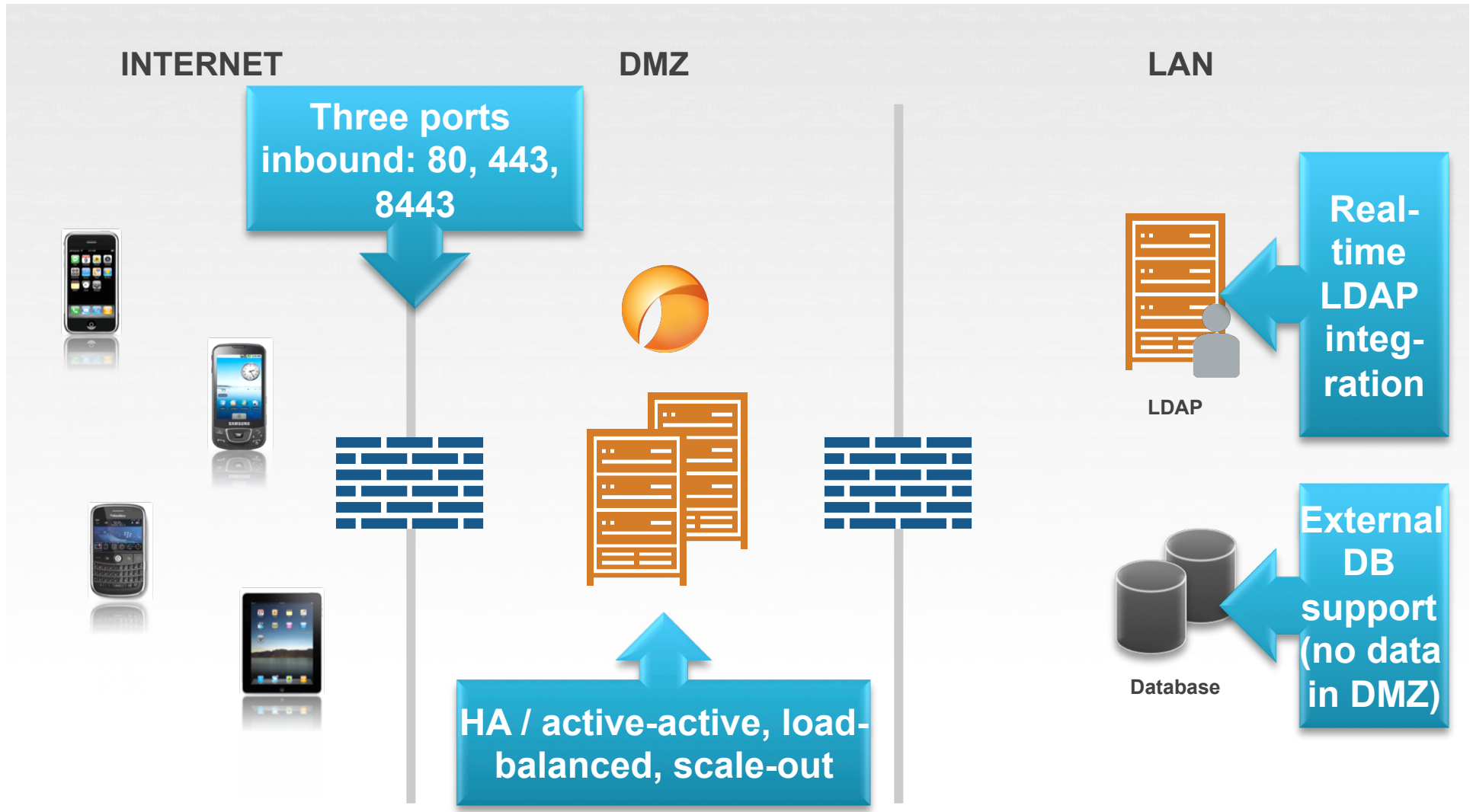
Zenprise Mobile DLP

- Accessing Confidential SharePoint library via Zenprise agent.



Enterprise-Grade (On Premise)

Secure, Available, Scalable



Enterprise-Grade (Cloud)

Secure, Available, Data Reliable, and Scalable

